



(Superior Precision Optical Technology)

CANTILEVER 30mm SCOPE MOUNT

INSTALLATION & USE INSTRUCTIONS

CONGRATULATIONS!

Your new *S.P.O.T. Cantilever 30mm Scope Mount* is enclosed.

S.P.O.T. mounts will fit *S.P.O.T.*, Aimpoint, and other similar 30mm scopes.

The solid steel cantilever design places the scope as far from the eye as possible, resulting in a maximized field of view while maintaining an immovable mounting platform.

IMPORTANT:
READ THESE MATERIALS
BEFORE
YOU USE THIS PRODUCT



S.P.O.T. Cantilever 30mm Scope Mount

Never disassemble or re-adjust *S.P.O.T.* products. Your *S.P.O.T.* mount comes pre-adjusted. If you face unique problems, ask your dealer to ship your mount to Mounting Solutions Plus for adjustment. Otherwise, **never** attempt to re-adjust or repair your sight. If repairs or adjustments are required, return your *S.P.O.T.* product to Mounting Solutions Plus. Re-adjustment or repair of *S.P.O.T.* scopes or mounts by anyone other than Mounting Solutions Plus will void all warranties.

S.P.O.T. products should **only** be installed by a competent gunsmith or armorer. Improper installation may result in damage to your sight or weapon, and will void all warranties.

Any alteration or misuse of any *S.P.O.T.* product will void any applicable warranties.

Never attempt to install any *S.P.O.T.* sight on your weapon, or change a battery, with a cartridge in the chamber. **Always** unload your weapon first.

Never point a loaded firearm at anything you are not authorized and willing to shoot.

Always carry spare batteries with you. Batteries generally go out at the worst possible moment.

Always avoid potentially lethal situations. *S.P.O.T.* products are intended strictly for competition, sporting, and other applications where there is no danger to the user. *S.P.O.T.* products are not intended for military, law enforcement, self defense, hunting of dangerous game, or any other application where the user may be placed in harm's way. Use of *S.P.O.T.* products in potentially dangerous situations will void all warranties, and will constitute an assumption of the known risks of engaging in such conduct.

Always avoid impact to your scope. *S.P.O.T.* mounts and sights are impact resistant, but no optical device will survive a significant impact under all circumstances.

Always avoid moisture. Many sights are water-resistant, but no optical device can be completely sealed against moisture under all circumstances.

Always avoid sudden temperature change. Most scopes come with an anti-fog coating, but no coating can completely prevent fogging and frost during rapid temperature and humidity changes.

Always use Back-Up Iron Sights. Red dot sights are extremely reliable, but no electronic "dot" sight can be guaranteed to function at all times under all circumstances. Back-Up Iron Sights are critical to ensure sighting capability should the "dot" sight fail to function under battery failure or under extreme circumstances.

Never violate these rules. Firearms are lethal and destructive devices. Violation of these warnings or misuse of any *S.P.O.T.* product may result in injury or death to the user or to others.

**IN OTHER WORDS:
USE SOME COMMON SENSE!!!**

**MOUNTING SOLUTIONS PLUS
IS NOT RESPONSIBLE FOR YOUR
MIS-USE OF THIS PRODUCT.**

INSTALLATION INSTRUCTIONS

Provide these instructions to your gunsmith or armorer for installation. Do not attempt to install this product unless you are qualified to do so.



1. Remove the top cap and de-grease the interior surface of both the mount base and the top cap.



2. De-grease the portion of the scope tube that will be clamped in the mount base.



3. Lightly dust the interior of both the mount base and the top cap with rosin.



4. Install the scope in the mount. Install the center screw only on each side of the top cap -- ***finger tight only. Do not use Lock-Tite Yet!***



5. Place the mount on the receiver and tighten the locking nut ***finger tight only.***



6. Make sure the base is as far forward on the receiver as possible, while still having all four corners on the receiver rail.



7. It is **critical** that all four corners of the mount base are supported by part of the receiver rail.



8. Level the receiver rail.

-5-



9. Remove the top elevation adjustment cover, and place a level on the exposed flat surface.



10. Turn the scope until level. Maintain level and tighten the two **center** screws just enough to lock the scope in place.



11. Place a drop of **Blue** Lock-tite on the four remaining top cap screws, and install each finger tight in the four **corners** of the top cap.

-6-



12. Tighten the top cap screws $\frac{1}{2}$ turn at a time each, in the correct order, to 18 inch pounds.



13. Do **not** over-torque the top cap screws, or the scope tube can be dented.



14. When the four corner screws are torqued down, remove the two center top cap screws.



15. Place a drop of **Blue** Lock-tite on the center top cap screws, and install finger tight.



16. Tighten the center top cap screws $\frac{1}{2}$ turn at a time each, alternating, to 18 inch pounds.



17. Re-check all top cap screws to ensure they are torqued to 18 inch pounds.



19. Torque the locking nut to 60 inch pounds.



Installation Is Complete !

Note scope caps are often turned to open down to avoid obstruction of view.



Mount the scope as far forward as possible when using a no-parallax scope.

Always mount no-parallax scopes as far forward on the receiver as possible. The closer the scope is to your eye, the more of your view of the environment will be obstructed. The farther the scope is from your eye, the less of your view of the environment will be obstructed.

Most “red dot” scopes are no-parallax sighting systems, and so eye relief and perfect alignment of the scope and eye are not major issues. If you can see the dot through the scope, you will hit the target – even if the dot is not centered in the scope tube.



S.P.O.T Mark III Sport Sights are available exclusively from Mounting Solutions Plus. **Mark III** sights are available in both 3 MOA and 6 MOA dots, and come with 11 intensity settings for any lighting condition.



SIGHTLINK fiber-optic front sights, also by Mounting Solutions Plus, are the perfect Back-up front sight posts, giving an iron sight picture similar to “Red Dot” scopes.

WARRANTY AND DISCLAIMER

THERE IS NO WARRANTY, REPRESENTATION OR CONDITION OF ANY KIND FOR *S.P.O.T.* PRODUCTS; AND ANY WARRANTY, EXPRESS OR IMPLIED, IS SPECIFICALLY EXCLUDED AND DISCLAIMED, INCLUDING THE IMPLIED WARRANTIES OF MERCHANTABILITY AND OF FITNESS FOR A PARTICULAR PURPOSE.

Some states do not allow limitations on implied warranties, so the above limitation may not apply to you.

IT IS AGREED THAT THE LIABILITY OF MOUNTING SOLUTIONS PLUS, AND THE PURCHASER'S SOLE REMEDY, WHETHER IN CONTRACT, UNDER ANY WARRANTY ALLOWED BY STATE LAW, IN TORT (INCLUDING NEGLIGENCE), IN STRICT LIABILITY OR OTHERWISE, SHALL NOT EXCEED THE RETURN OF THE AMOUNT OF THE PURCHASE PRICE PAID BY PURCHASER, OR ALTERNATIVELY REPAIR OR REPLACEMENT OF THE *S.P.O.T.* PRODUCT; AND UNDER NO CIRCUMSTANCES SHALL MOUNTING SOLUTIONS PLUS BE LIABLE FOR ANY SPECIAL, INCIDENTAL OR CONSEQUENTIAL DAMAGES INCLUDING, BUT NOT LIMITED TO, PERSONAL INJURY, DEATH, PROPERTY DAMAGE, DAMAGE TO EQUIPMENT, LOST PROFITS OR REVENUES, COST OF OBTAINING REPLACEMENTS, OR OTHER ADDITIONAL EXPENSES, EVEN IF MOUNTING SOLUTIONS PLUS HAS BEEN ADVISED OF THE POSSIBILITY OF SUCH DAMAGES. THE LIMITATIONS ON THE PRICE PAID FOR THE PURCHASE OF THIS *S.P.O.T.* PRODUCT IS A CONSIDERATION IN LIMITING THE LIABILITY OF MOUNTING SOLUTIONS PLUS AND THE PURCHASER'S REMEDIES.

Some states do not allow the exclusion or limitation of incidental or consequential damages, so this limitation or exclusion may not apply to you.

MOUNTING SOLUTIONS PLUS WILL NOT BE LIABLE FOR ANY DAMAGES, LOSSES OR EXPENSES AS A RESULT OF PURCHASER'S NEGLIGENCE, WHETHER DEEMED ACTIVE OR PASSIVE AND WHETHER OR NOT ANY SUCH NEGLIGENCE IS THE SOLE CAUSE OF ANY DAMAGE, LOSS OR EXPENSE. MOUNTING SOLUTIONS PLUS WILL NOT BE LIABLE FOR THE USER'S VOLUNTARY AND KNOWING ASSUMPTION OF THE KNOWN RISKS ATTENDANT TO ANY POTENTIALLY LETHAL SITUATION.

This warranty and disclaimer describes specific legal rights, and you may have other rights which vary from state to state.

S.P.O.T. SPORT SIGHTS

and related shooting products are available from:

Mounting Solutions Plus

P.O. Box 971202

Miami, Florida 33197

Phone:

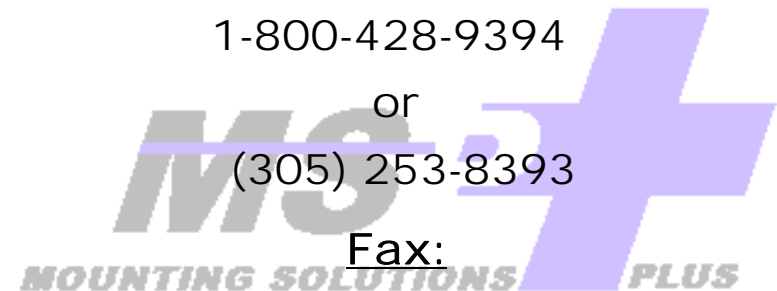
1-800-428-9394

or

(305) 253-8393

Fax:

(305) 232-1247



www.mountsplus.com

